



# PELLO - Smart Sensors and AI

Facilitating Efficient Waste Collection

# In-Field Waste Management



In Bin Sensor combined with an extensive Cloud system driven by AI

# Our Vision: Smart Waste Management

Develop an in Bin Sensor coupled with an AI system for:

- Accurate fill level
- Accurate AI contamination detection
- GHG reduction
- Real Sustainability #'s
- Significant Operations optimization

Found that:  
Smart Waste Management is Hard

# Why Do we say Hard?

Been there done that – in the REAL world for the last 8+ years.

- Experience running numerous sensors that did not work out (see photo of some of them below)
- Deployed 7000+ other manufacturer's sensors that in the end also did not allow for Smart Waste Management.
  - But we know what is needed
  - And we Know what has been missed



# What's Needed or Been Missed?

- **Accurate Data**
  - Single sensors (ultrasonic, or laser TOF) are problematic - show full or empty but who knows that if you cannot "see" the bin ?
  - Optical only (camera or laser) - also fail when dirty

# What's Needed or Been Missed?

- **Accurate Data**
  - Single sensors (ultrasonic, or laser TOF) are problematic - show full or empty but who knows that if you cannot "see" the bin ?
  - Optical only (camera or laser) - also fail when dirty

PELLO M300 sensor ultrasonically  
measures 3 zones at once

# What's Needed or Been Missed?

- **Consistent Data Reporting**
  - bins do not “move”  
no connect = never connect

# What's Needed or Been Missed?

- **Consistent Data Reporting**
  - bins do not “move”  
no connect = never connect

PELLO M300 sensor allows for an external antenna for low signal areas



# What's Needed or Been Missed?

- **Durability**
  - Built for purpose
  - Optics much more affected than Ultrasonics

# What's Needed or Been Missed?

- **Durability**
  - Built for purpose
  - Optics much more affected than Ultrasonics

PELLO M300 ultrasonic sensor has always made a fill measurement

# What's Needed or Been Missed?

- **Contamination Detection**
  - **With Photos – by eye or AI**

# What's Needed or Been Missed?

- **Contamination Detection**
  - **With Photos – by eye or AI**

PELLO M300 sensor has color camera  
and integrated AI

# What's Needed or Been Missed?

- **Automation**
  - Manually check a couple of thousand bins daily?

# What's Needed or Been Missed?

- **Automation**
  - Manually check a couple of thousand bins daily?

PELLO has integrated automatic notifications

# What's Needed or Been Missed?

- Cloud based open platform with:
  - Individual access by level &
  - API integration capability for 3<sup>rd</sup> party sensors
- Integrated optimization & cutting edge AI tech

# What's Needed or Been Missed?

- Cloud based open platform with:
  - Individual access by level &
  - API integration capability for 3<sup>rd</sup> party sensors
- Integrated optimization & cutting edge AI tech

PELLO has access by admin level and allows individual access to single bins





Smart Waste Management Solved

The PELLO System

# PELLO Advanced Technology for Smart Waste Management

## Our Secret?

- Unique cellular based multisensor
- Multiple ultrasonics, Camera, AI
- Real Waste Management experience



DDW M300  
In Bin Sensor

## wAiste™

- Cloud based open platform
- Cutting edge tech with AI

## ... A Smart Waste System

- Real-time fill level monitoring
- Efficient pickup scheduling,
- Instant notifications
- Precise bin location tracking,
- Seamless integration
- Cutting-edge AI models to:
  - optimize waste reduction,
  - Build useable solutions through high accuracy



# Container View

## A Smart Waste System

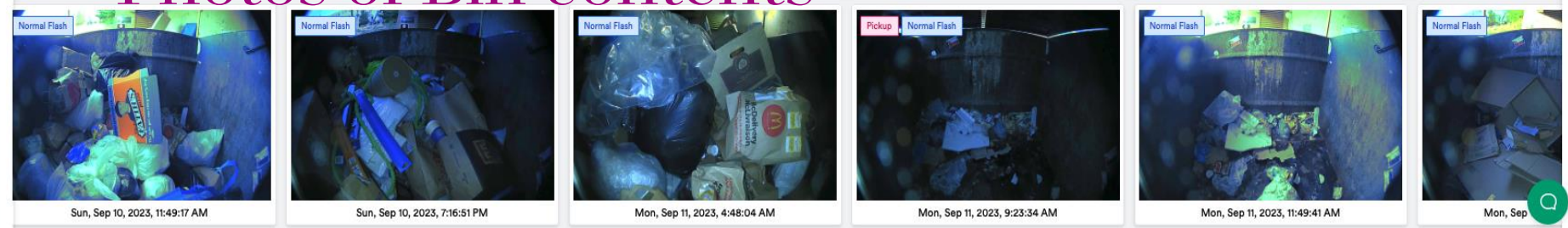
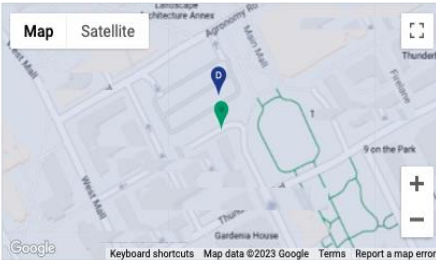
- Operations
  - Dashboard
  - Sites
  - Positions
  - Pads
  - Stalls
  - Containers
  - Notifications
  - Reports
  - Admin
  - Device Maintenance
  - Settings
- Carl Anderson
- Logout

### Stall Details

[Edit](#)

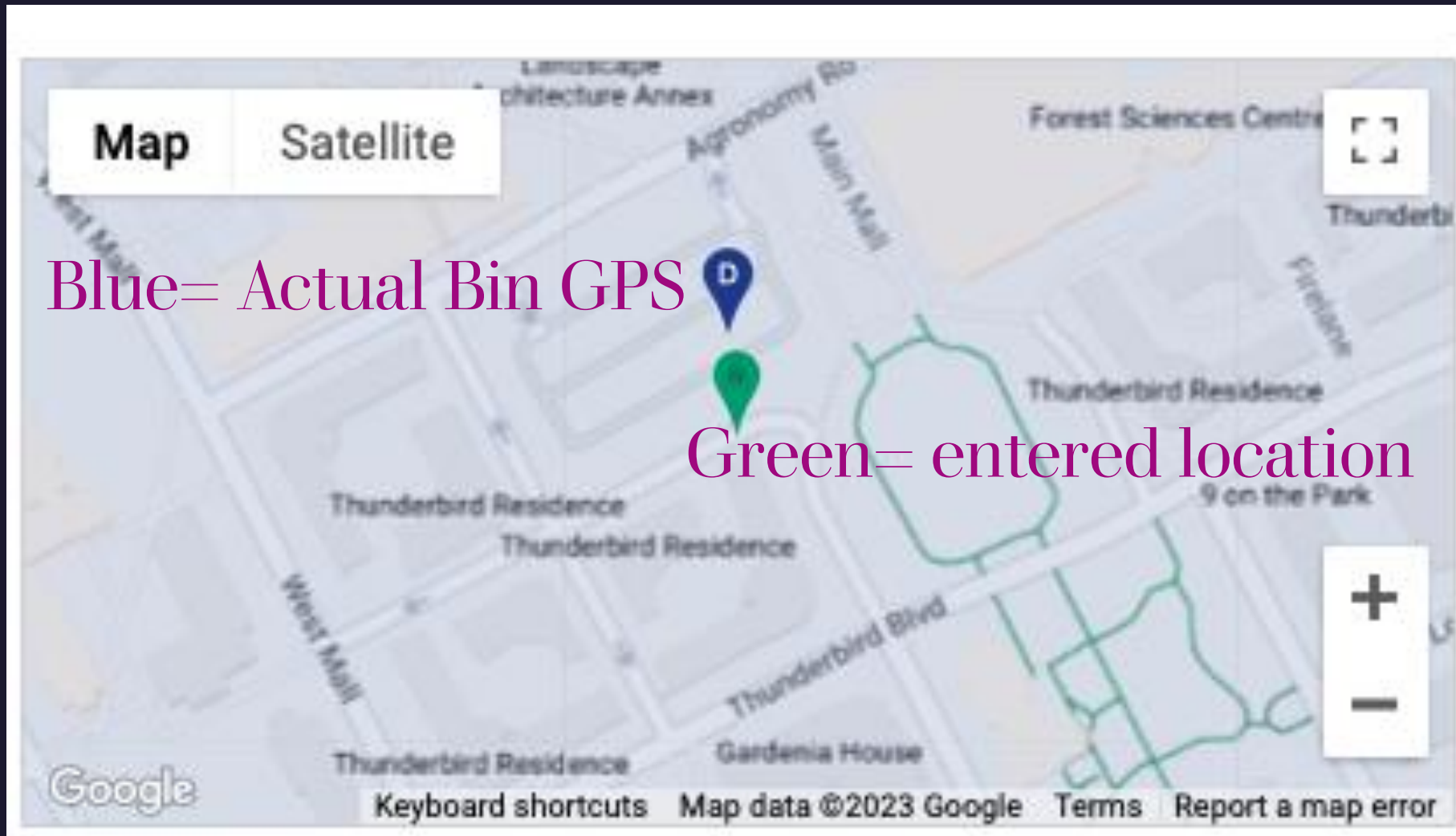
## Container Information

<b>Stall Name</b>	<b>Fill Type</b> MSW (Waste)	<b>Device</b> 1012212111000570	<b>Device Type</b> Pello
<b>Device Status</b> Active	<b>Container</b> 0133 - 6YD Slant Back	<b>Capacity</b> 6 yd <sup>3</sup>	<b>Current Fill Level</b> 9%
<b>Device Time Zone</b> America/Vancouver	<b>Last Connection Time</b> Thu, Sep 14, 2023, 12:18:37 PM	<b>Last Pickup Fill Level</b> 64%	<b>Last Pickup Time</b> Thu, Sep 14, 2023, 8:36:18 AM
<b>Average Pickup Fill Level</b> 63%	<b>Location Details</b> One near West Mall	<b>Pickup Schedule</b> Monday, Tuesday, Wednesday, Thursday, Friday	



# Quick looks - Location

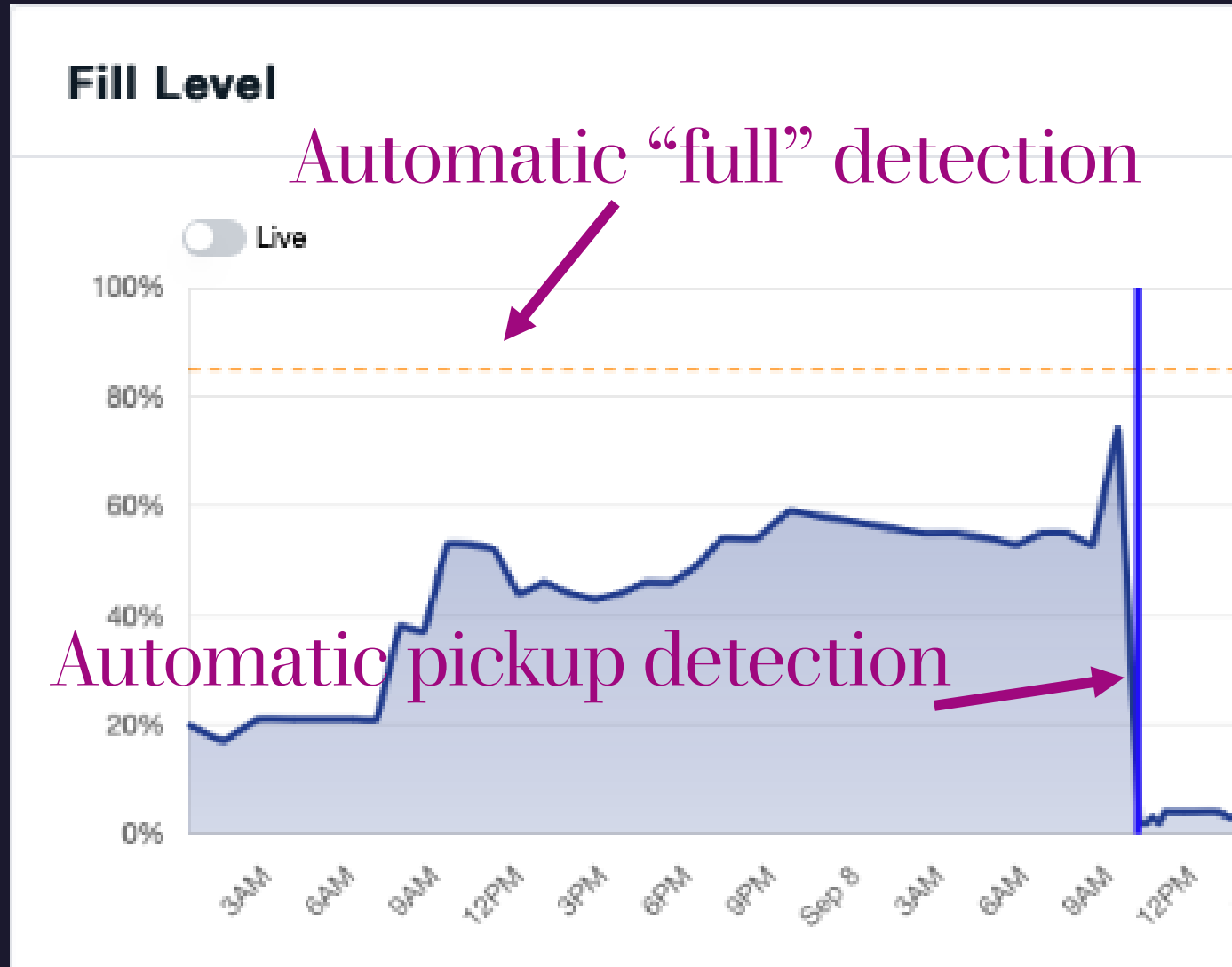
Blue=Actual GPS location



# Quick looks – Fill Level

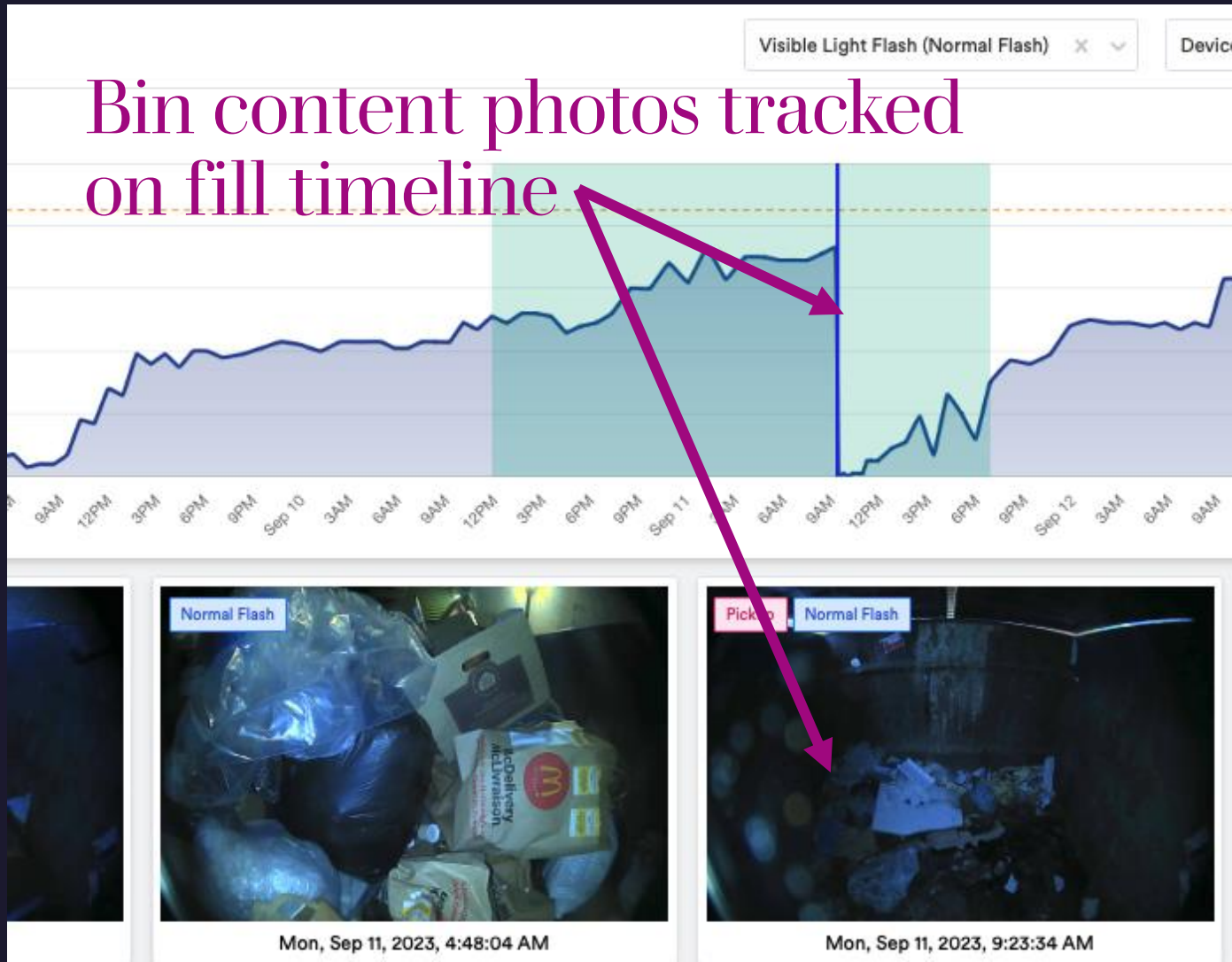


# Quick looks – Edge Automation



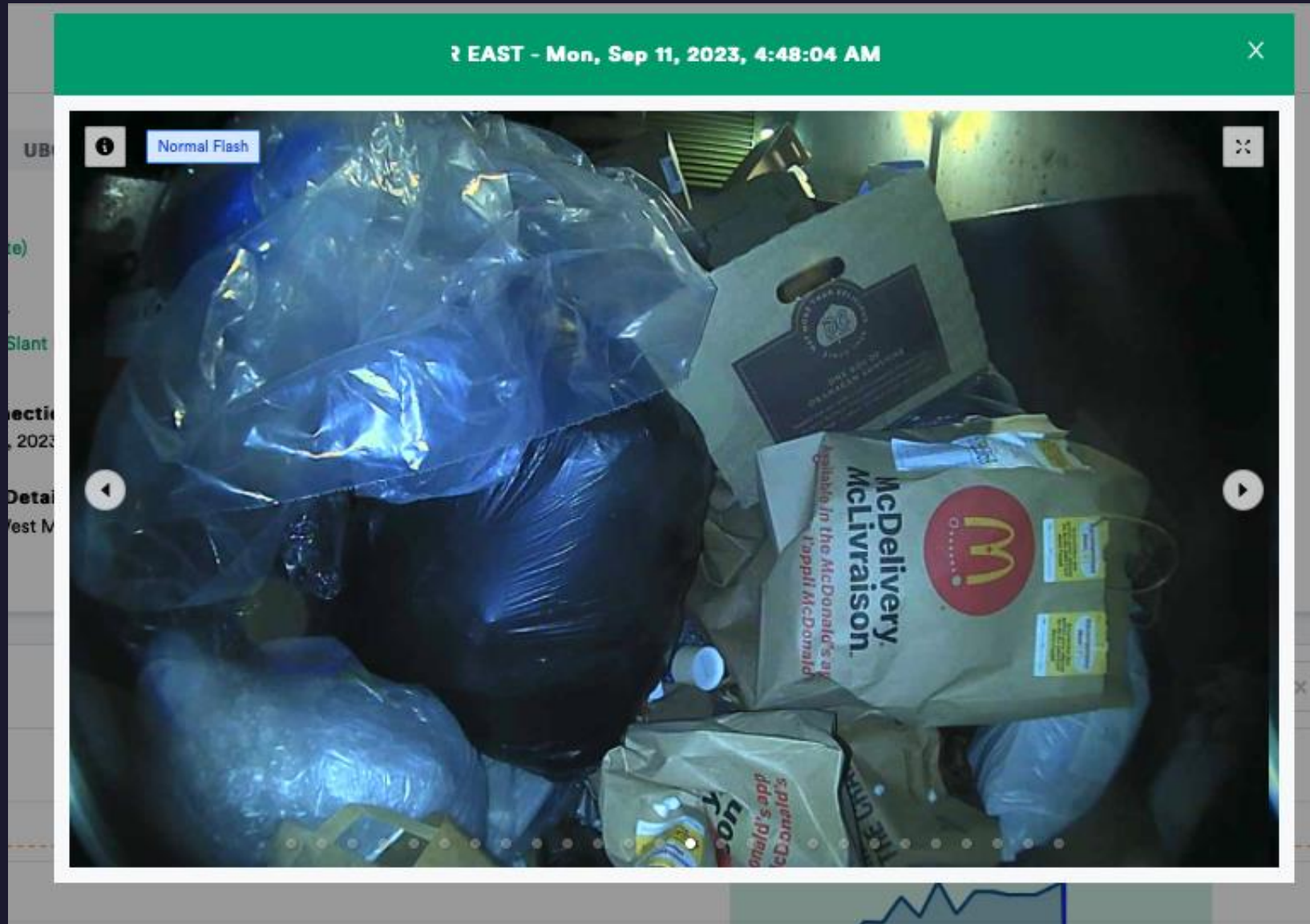
# Quick looks – Photo Timeline

## Photos tracked on fill timeline

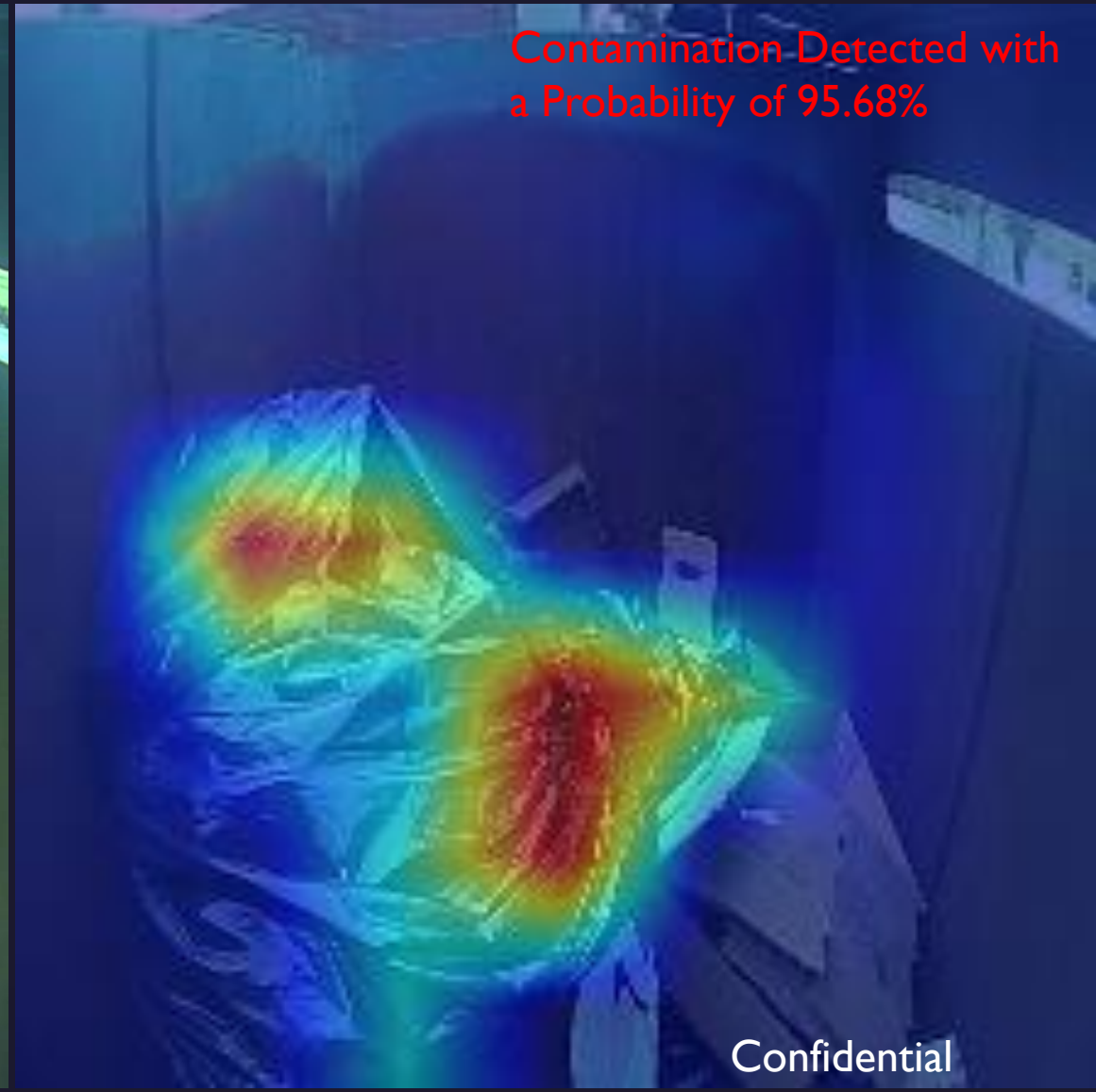




# Quick looks – Photo Detail

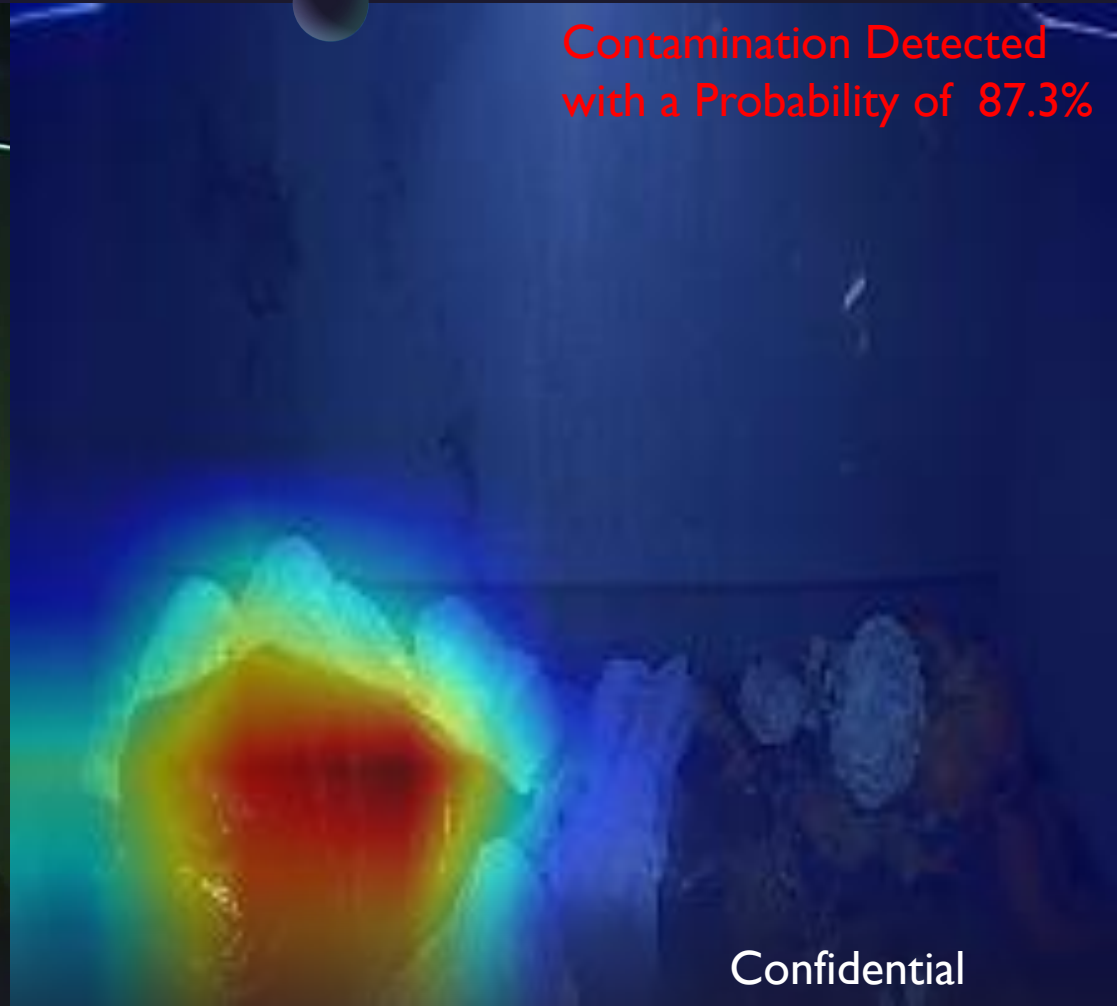


# Plastic Contamination Detection in Recycling Bins with 95% accuracy



Confidential

# Plastic Contamination Detection in Organics Bins with 89% accuracy



Contamination Detected  
with a Probability of 87.3%

Confidential

# Plastic Contamination Detection Notifications



app.hellopello.io/notifications?notificationsFilters=eventType&notificationsLimit=100&notificationsPage=1&notificationsSort=event.time...

- Operations
- Dashboard
- Sites
- Positions
- Pads
- Stalls
- Containers
- Notifications
- Reports
- Admin

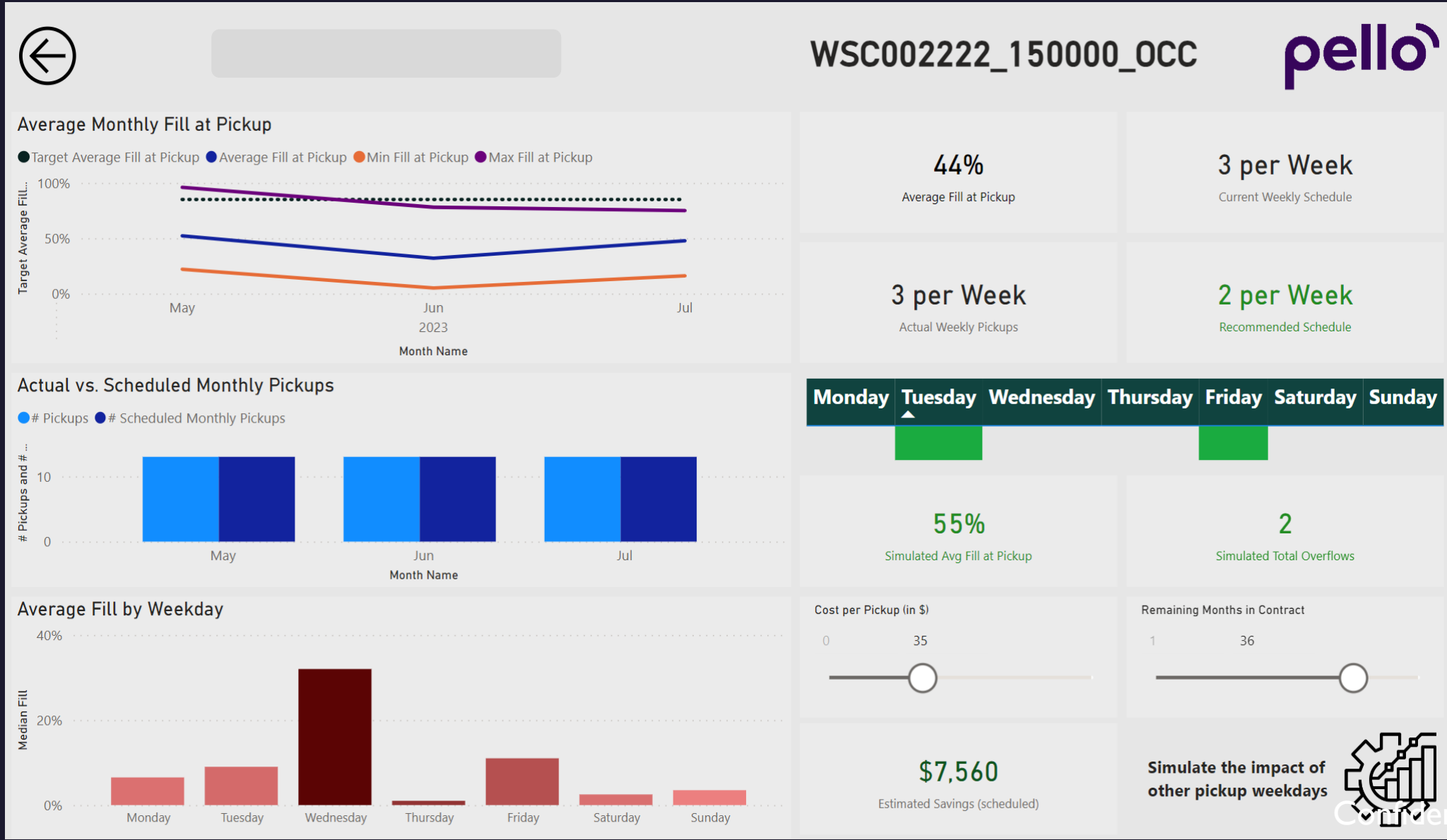
Home / Notifications View Notification Settings

Notifications

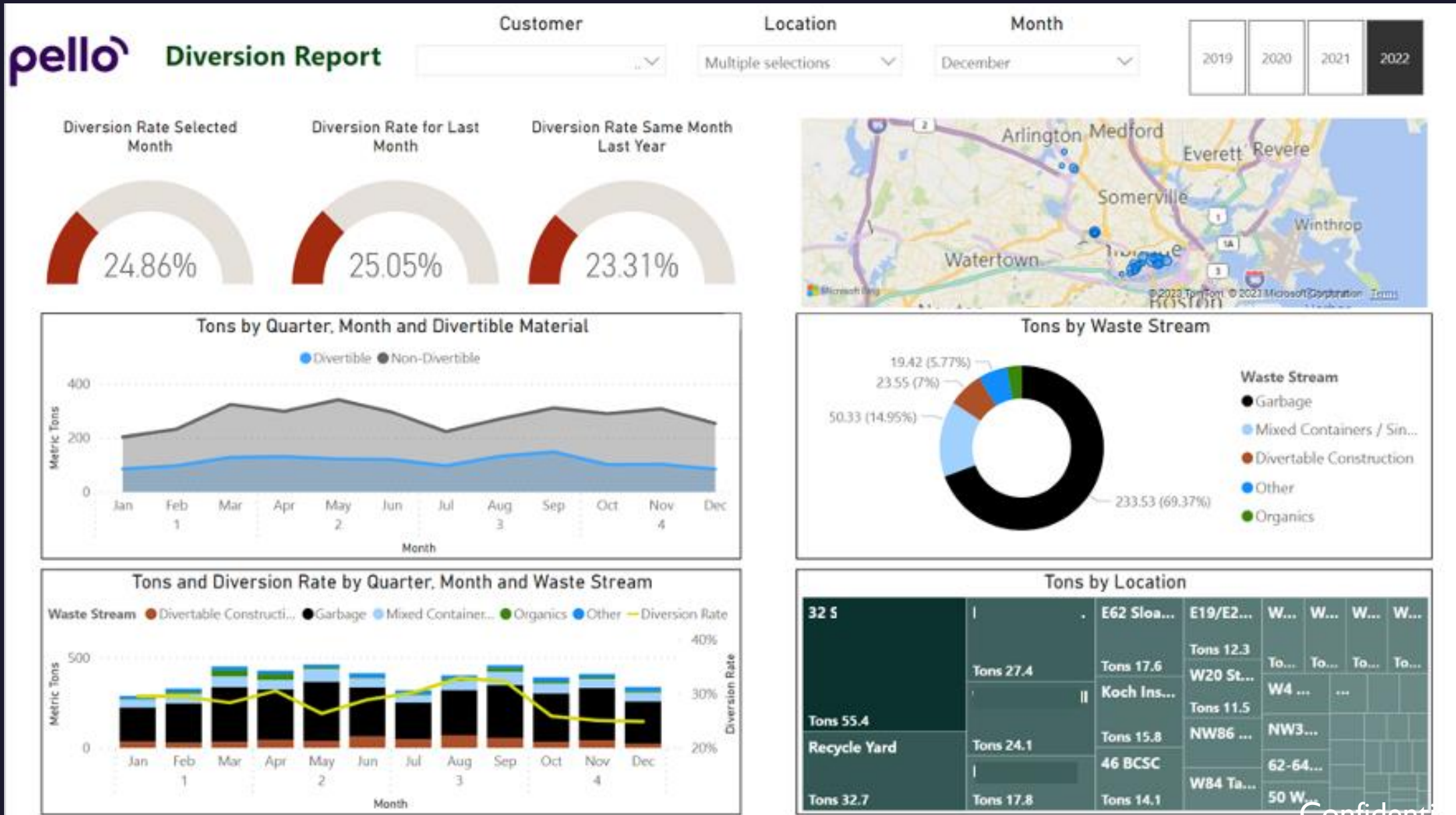
Filters: 1 | Local Time (America/New\_York) | Sep 14, 2023 - Sep 14, 2023 | Contamination Detected | Export

Upload Time	Device Time	Event	Fill Level	Resolved	Resolved Time	Stall	Device
Thu, Sep 14, 2023, 4:30:39 PM	Thu, Sep 14, 2023, 4:30:33 PM	Plastic Contamination	12%			WSC004645_30000_OCC	101137230100042
Thu, Sep 14, 2023, 4:24:27 PM	Thu, Sep 14, 2023, 4:24:13 PM	Plastic Contamination	59%			WSC001116_100000_OCC	1012212111000228
Thu, Sep 14, 2023, 4:24:27 PM	Thu, Sep 14, 2023, 4:24:20 PM	Plastic Contamination	59%			WSC001116_100000_OCC	1012212111000228
Thu, Sep 14, 2023, 4:08:00 PM	Thu, Sep 14, 2023, 4:07:31 PM	Plastic Contamination	12%			WSC002528_30000_OCC	101137230100041
Thu, Sep 14, 2023, 4:08:00 PM	Thu, Sep 14, 2023, 4:07:39 PM	Plastic Contamination	12%			WSC002528_30000_OCC	101137230100041
Thu, Sep 14, 2023, 2:12:24 PM	Thu, Sep 14, 2023, 2:12:19 PM	Plastic Contamination	0%			WSC001333_73750_OCC	101137230100036

# Bin Optimization for reducing cost and GHG emissions



# Real Sustainability reporting



# Thank you



Adding Visibility to Smart Waste  
for a Greener, Cleaner World

