



Metro Vancouver: Organics Overview

Andrew D. Marr, P.Eng

DIRECTOR – SOLID WASTE PLANNING
SOLID WASTE SERVICES DEPARTMENT

WMABC Conference – January 31, 2018

Orbit number

Metro Vancouver: Organics Overview

- **Supporting Programs**
- **Supporting Research**
- **Challenges**

Supporting Programs



metrovancouver
SERVICES AND SOLUTIONS FOR A LIVABLE REGION

Organics Disposal Ban

- 7 inspectors; 8 sites; surcharges



Survey Date	No. of Exceedances			Total Inspections
	>25% Food	>10% Food	>5% Food	
April 2015 (<enforcement)	31	68	113	3278
August 2016 (>enforcement)	6	10	12	4049

Municipal Support

- Individual municipalities
- Mandatory diversion
 - SF residents
 - MF residents
 - ICI businesses

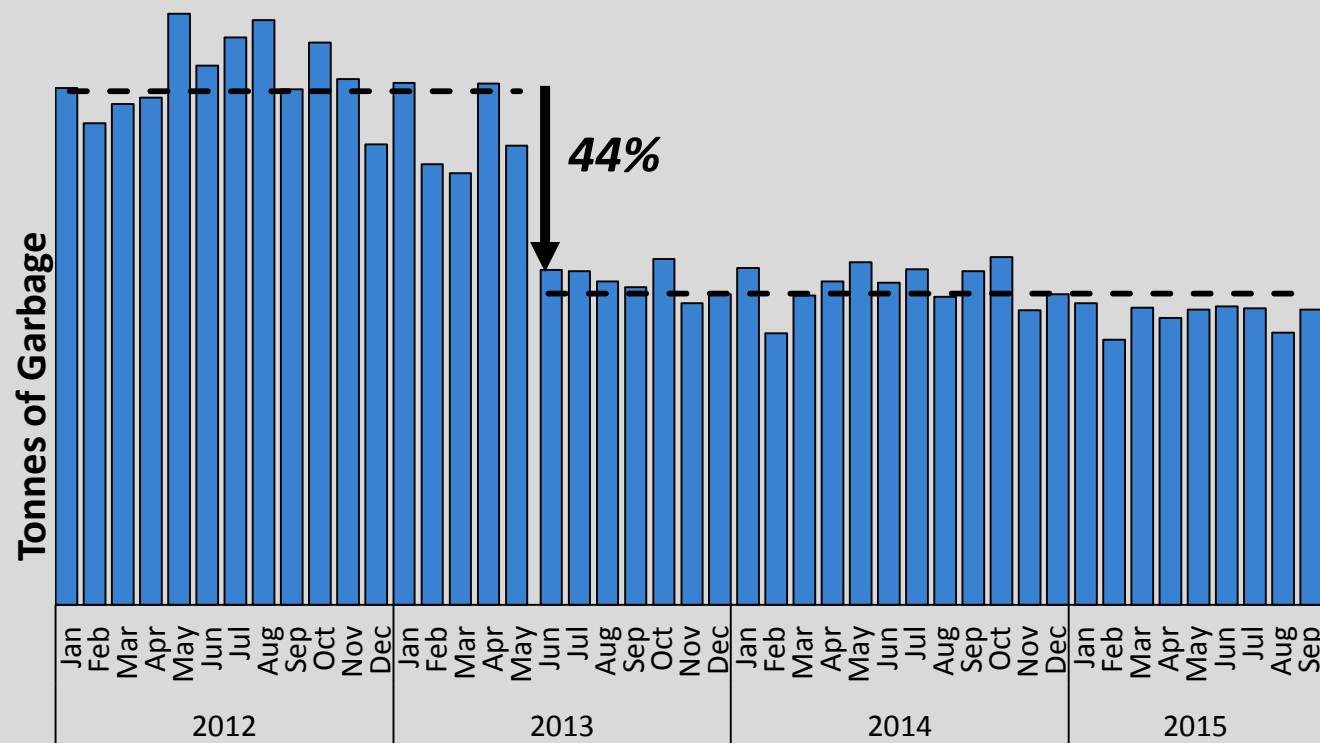
Summary of Municipalities with Regulatory Tools and Programs to Encourage Single-Family, Multi-Family and Commercial/Institutional Recycling

Single-Family		Multi-Family		Commercial/ Institutional	
Recycling	Organics	Recycling	Organics	Recycling	Organics
✓	✓	✓	✓	✓	✓
MMBC	✓	MMBC			
✓	✓	✓			
MMBC	✓	MMBC			
✓	✓	✓	✓	✓	✓
✓	✓				
✓	✓	✓	✓		
✓	✓	✓	✓		
✓	✓	✓	✓		
✓	✓	✓	✓		
MMBC	✓	MMBC	✓		
✓	✓				
✓	✓	✓	✓	✓	✓
✓	✓	✓	✓	Pilot	Pilot
✓	✓	✓	✓	✓	✓
MMBC	✓	MMBC	✓	✓	✓
✓	✓	✓			
✓	✓	✓	✓	✓	✓
18 of 18	18 of 18	16 of 18	12 of 18	6 of 18	6 of 18

✓ = Has a policy or program that applies to at least 80% of households or businesses in the municipality

MMBC = Serviced directly by Multi-Material BC

Every-Other-Week Waste Collection



Every-other-week waste collection: City of Vancouver

For Composting



- 'Food isn't Garbage' communications campaign

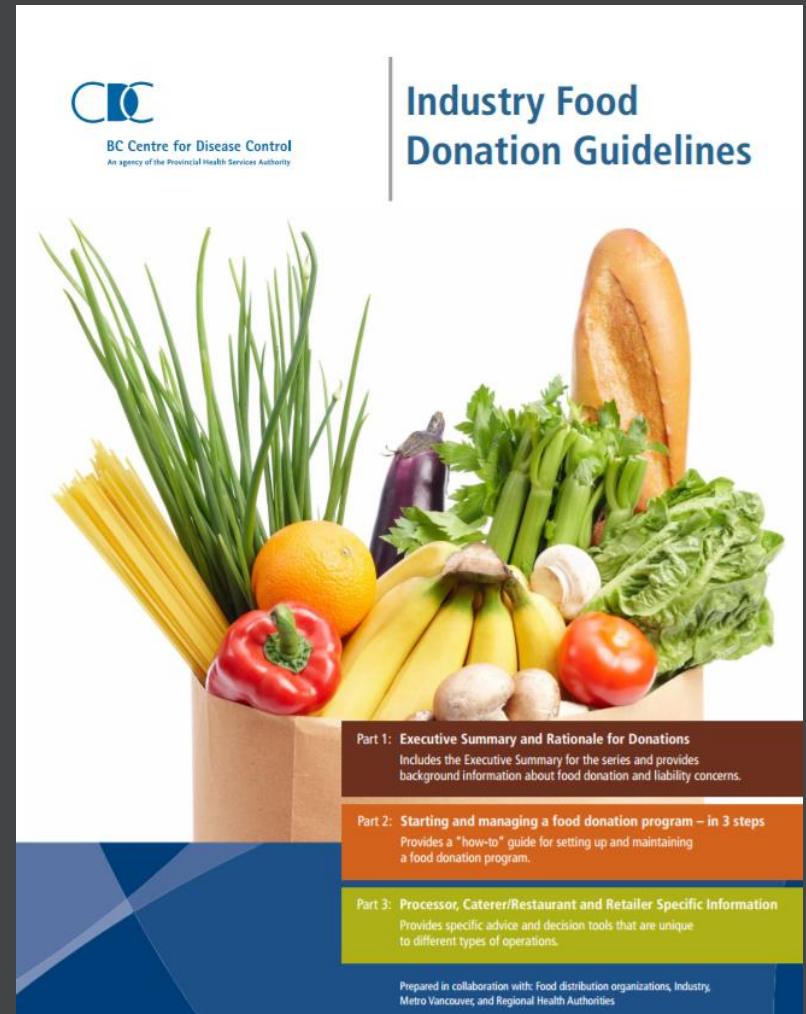
For Food Waste Prevention



- 'Love Food Hate Waste.ca'

For Food Donation

- BC CDC Food Donation Guide



For Food Rescue



- “Feed the 5000”

National Food Waste Reduction Strategy

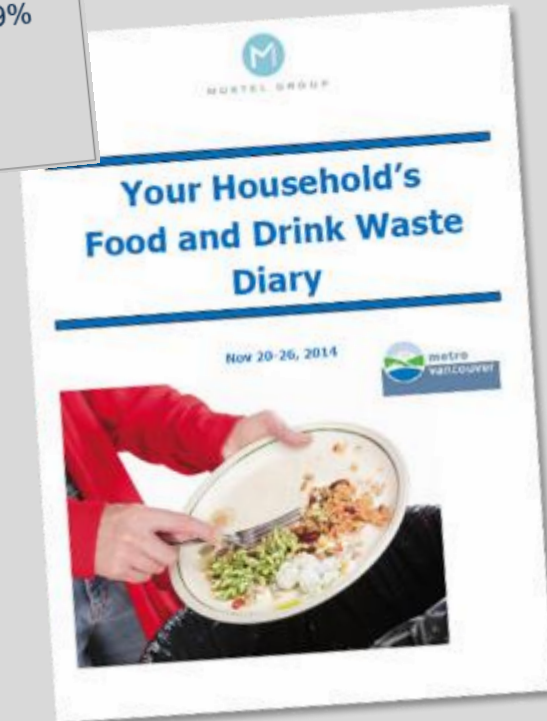
- ❑ Revised food labels
- ❑ Federal Tax incentives for donation of nutritious foods
- ❑ Canada-wide:
 - ❑ organics disposal bans
 - ❑ Love Food Hate Waste
 - ❑ Food Donation Guidelines
- ❑ Etc.

Supporting Research

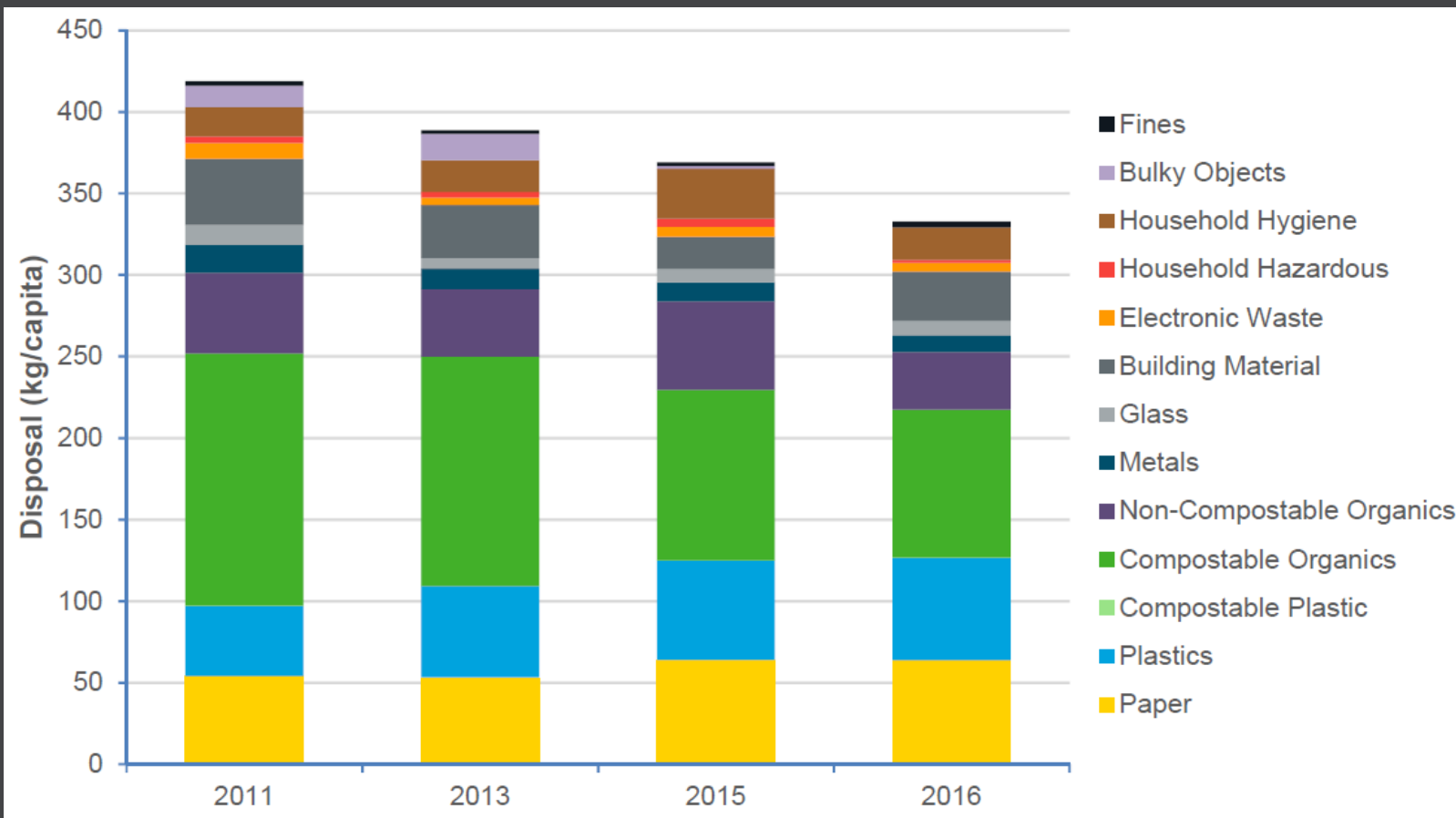


metrovancouver
SERVICES AND SOLUTIONS FOR A LIVABLE REGION

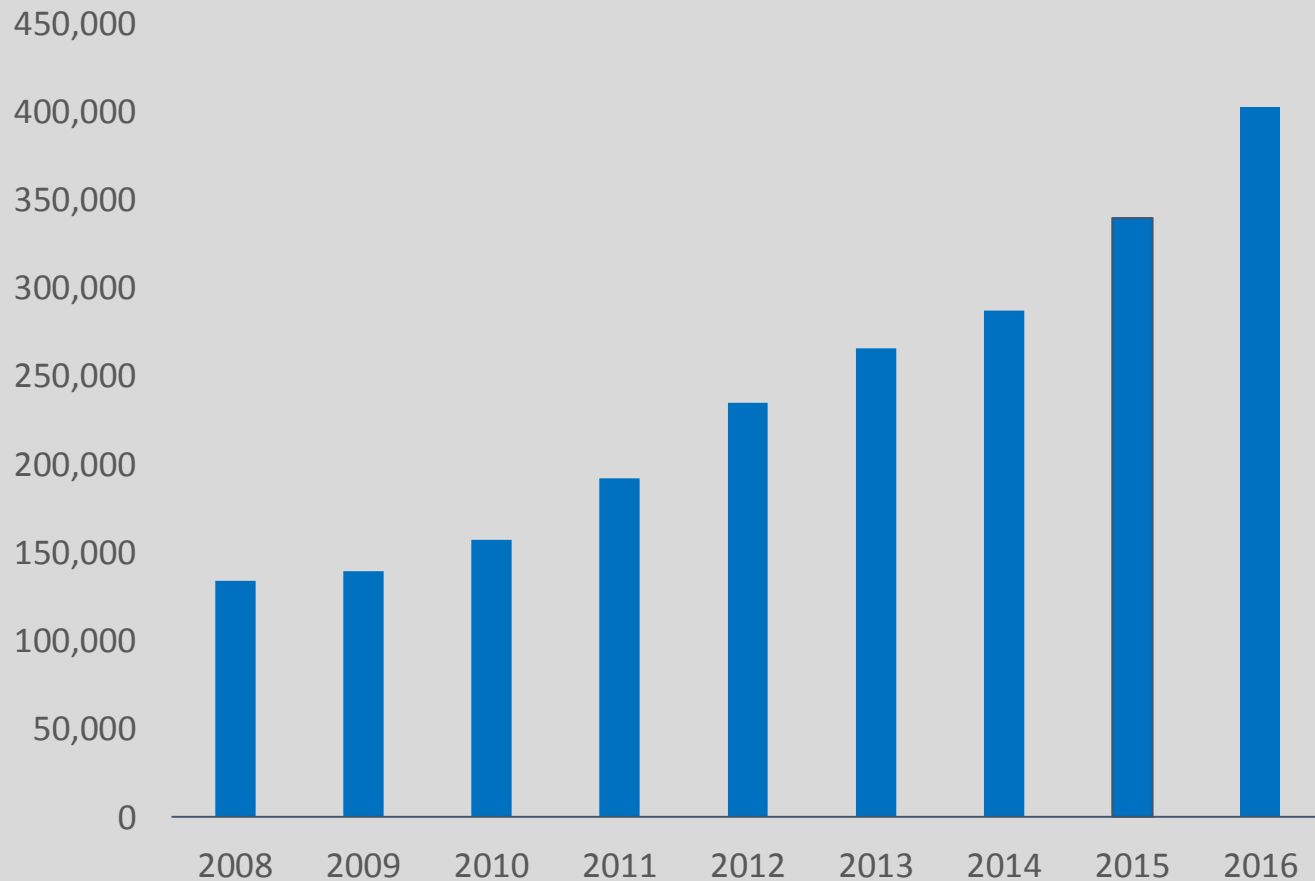
Surveys: IC&I, Multi Family & Single Family



Waste Composition Studies: Less Organics Disposed



Inventory: More Organics Processed

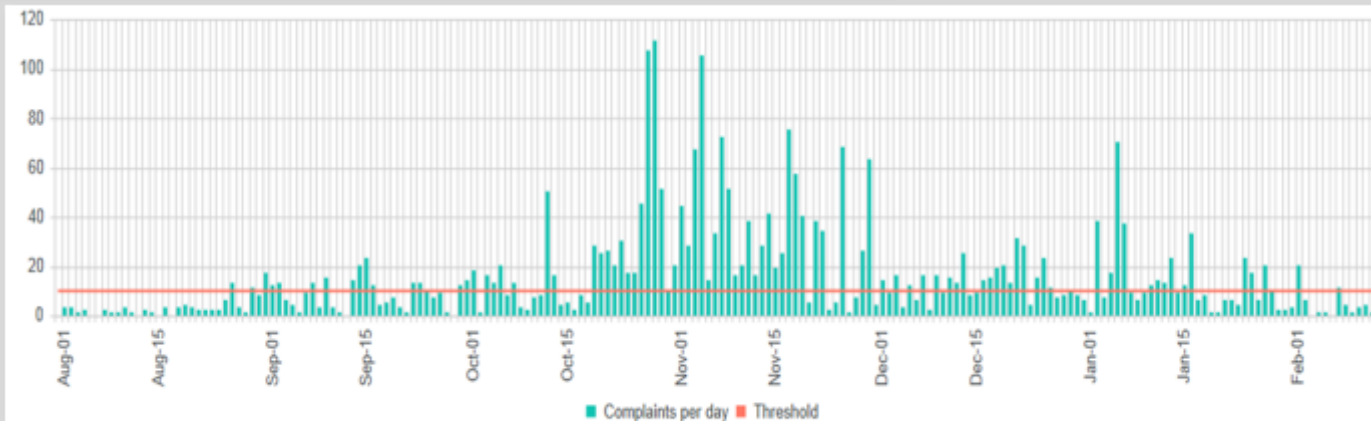
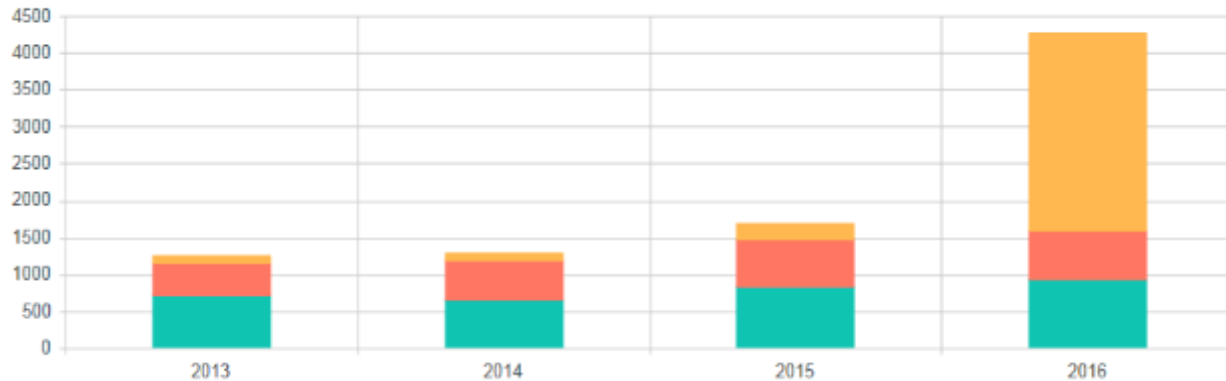


Challenges



metrovancouver
SERVICES AND SOLUTIONS FOR A LIVABLE REGION

Challenge: Odour





Harvest Power

~200,000 tonnes/year



Envirosmart Organics

~150,000 tonnes/year



Surrey Biofuel (late 2017)

~115,000 tonnes/year

Challenge: Regional Processing Capacity

- Operational, structural improvements reducing complaints
- Reduced volumes/types accepted at local processors
- Temporary changes to tolerances, surcharges as needed

Regional processing capacity reduced



Thank you

andrew.marr@metrovancover.org



metrovancover
SERVICES AND SOLUTIONS FOR A LIVABLE REGION