

# Waste Management Association BC

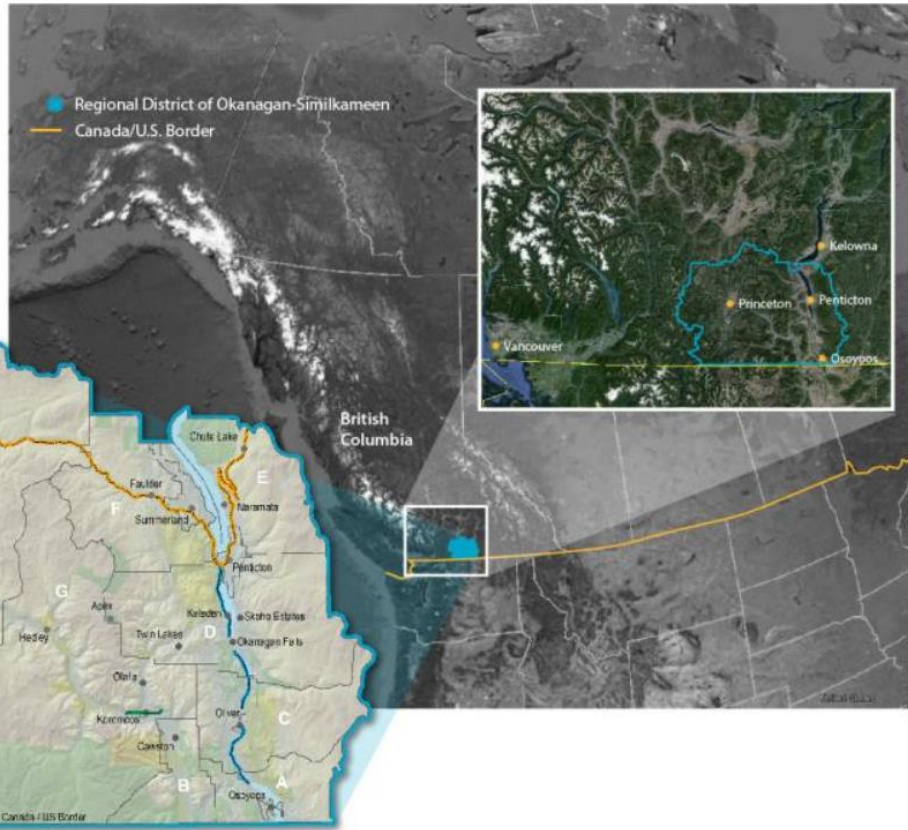
## February 23, 2022

Regional District of  
Okanagan-Similkameen

# AGENDA

- Overview
- Initiatives
- Challenges
- Questions



# RDOS ...



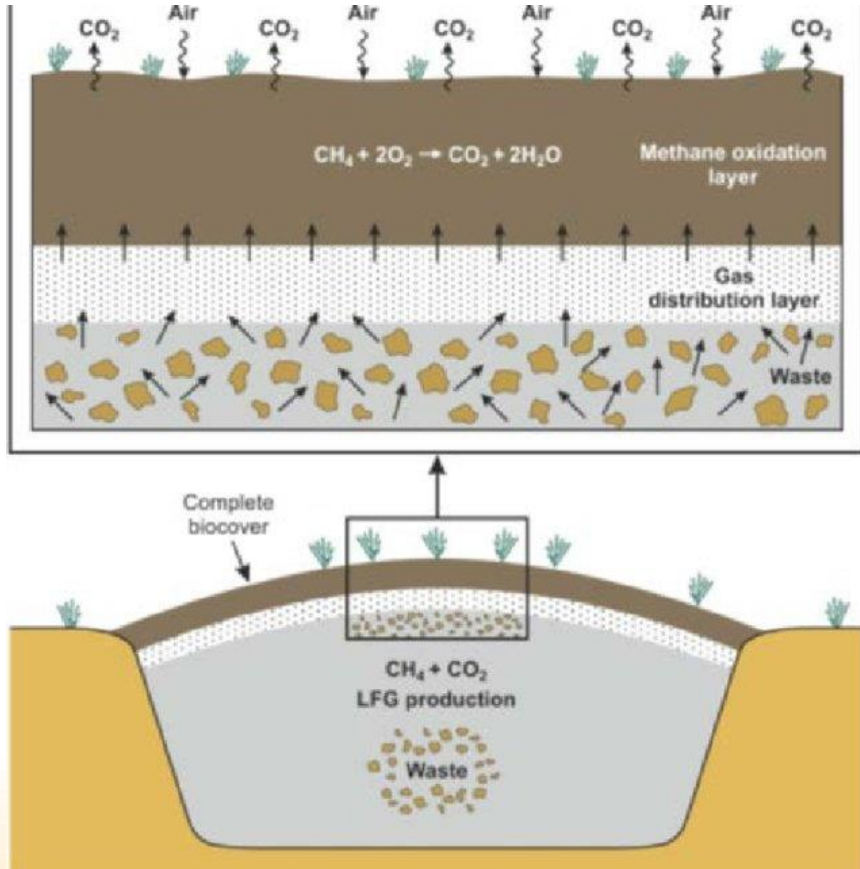
Population: 95,000  
6 municipalities  
9 Electoral Area

Area 10,400 Km<sup>2</sup>

# RDOS Facilities...

- 3 landfills: Campbell & Oliver (Sanitary), Okanagan Falls (processing & DLC)
- 2 Transfer Stations: Keremeos  , Apex 
- Nine (9) curbside Pickup services including: refuse, recycling, yard, and large item pick up.
- Two Recycle BC depots
- HHW facility
- Illegal dumping program
- 2 composting facilities (under construction)

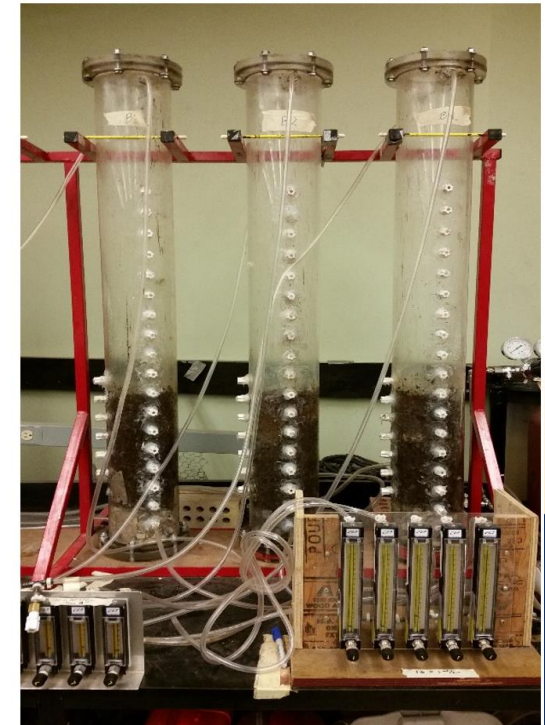
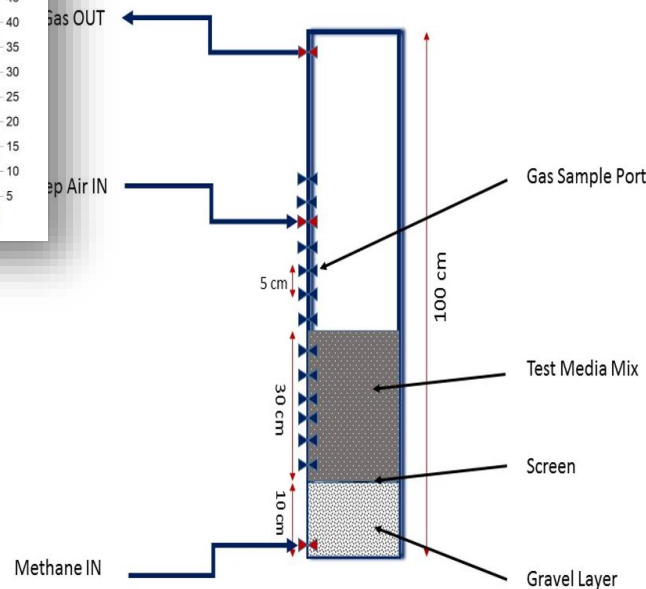
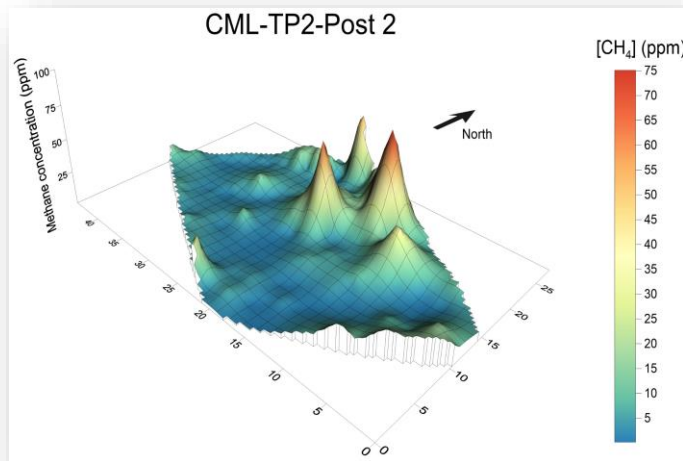
# Biocover



- CMLF currently required to have gas collection
- GHGs too low to harvest
- Cost of gas collection extreme
- Landfill Fire risk of adding gas collection extreme
- Biocover better breakdown of GHGs than gas collection.
- Can construct Biocover from class B compost product
- Final stages of approval

# Comprehensive Study at CML

- Sperling Hansen Associates
- University of Calgary



# 2-year BioCover Study



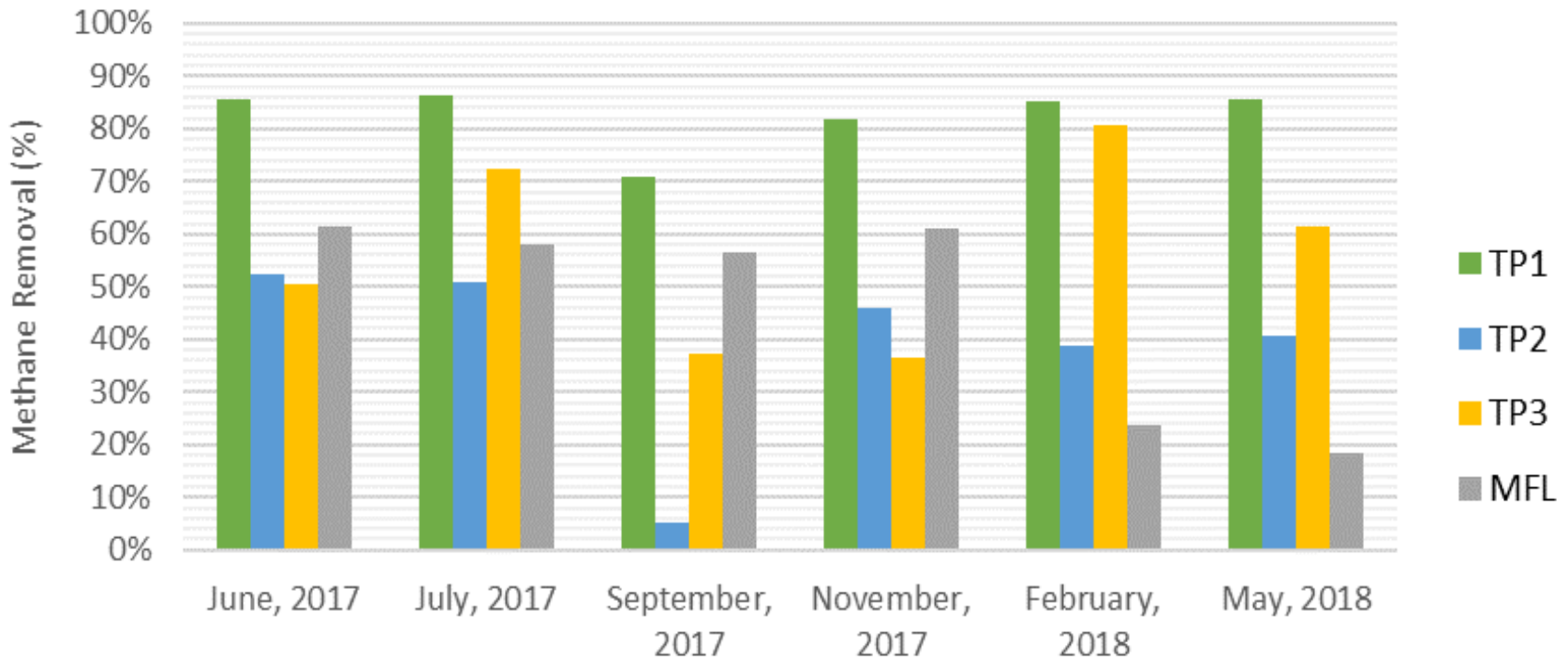
# 2-year BioCover Study



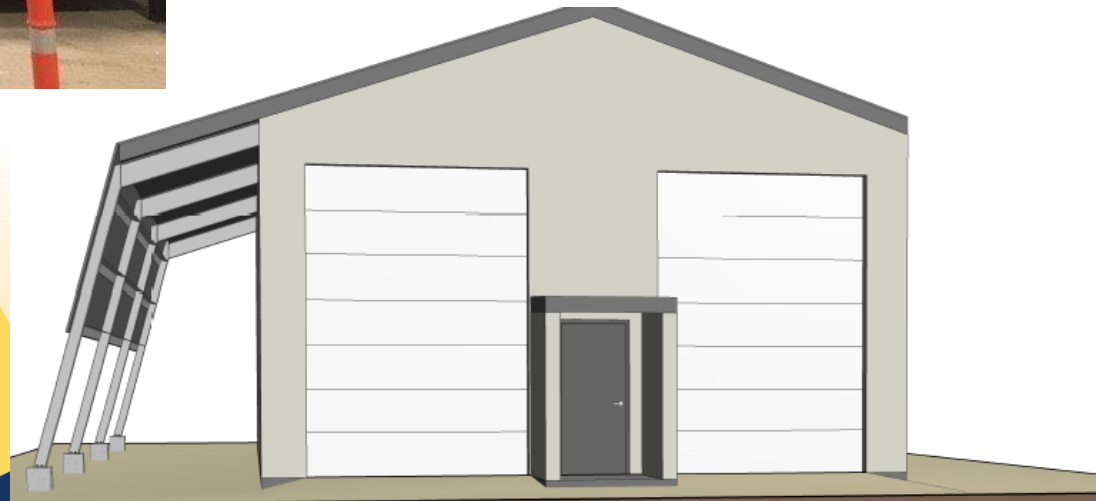


# 2-year BioCover Study

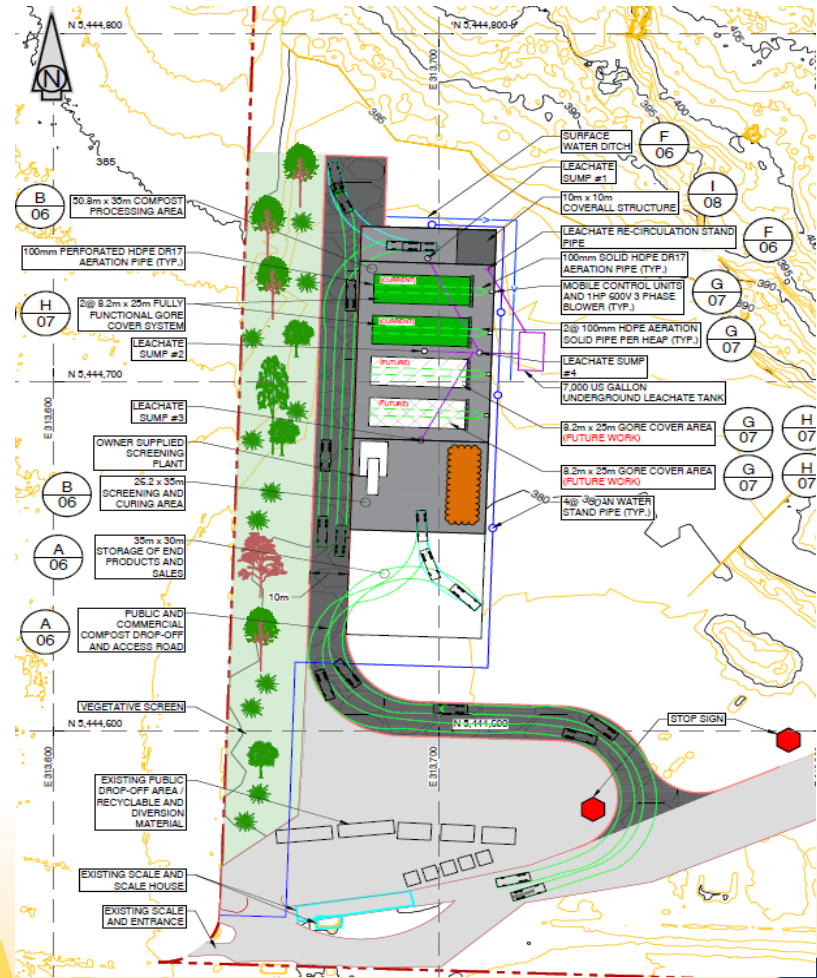
Results showed that optimum biocover blend with methane emission reduction rates between 71% and 86% (year-round average of 83%)



# Apex Resort T.S. (unmanned)...

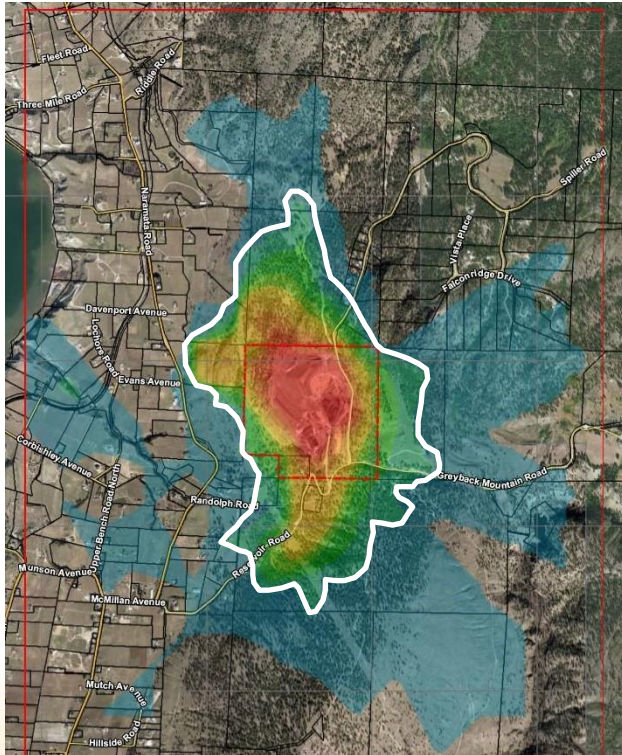


# Oliver Composting...

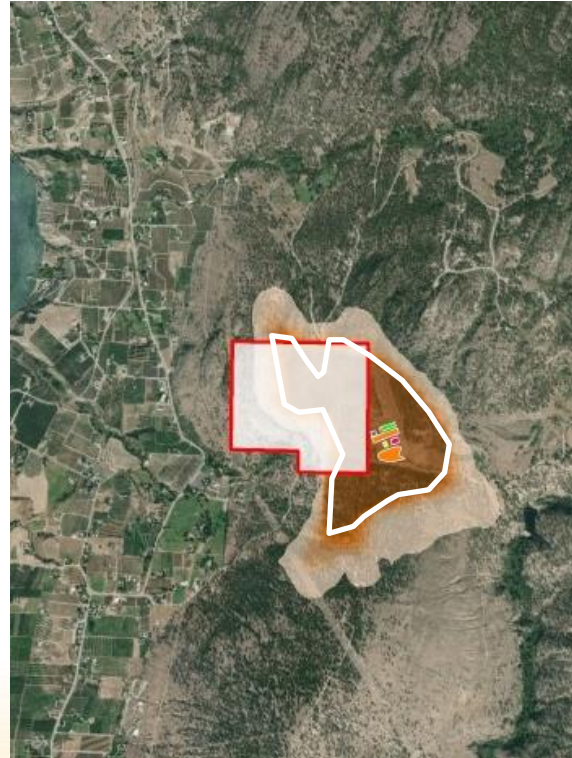


# CML Odour Nuisance Modeling

**Status Quo – Existing  
Aerated Static Pile –no food**




**In-vessel Composting on  
Proposed Property incl. food**



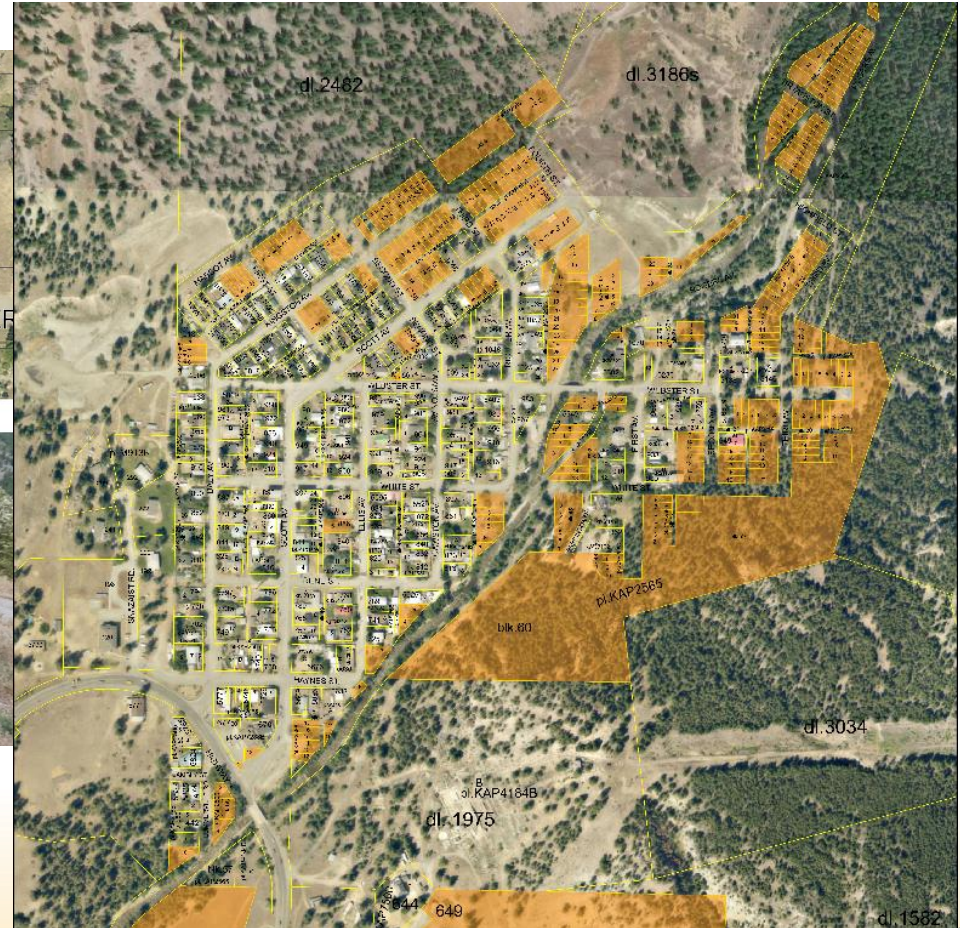
- In-vessel composting reduces potential odour impacts
- Potential nuisance further away from residents on the proposed property
- White 5 OU
- Light blue/brown 1 OU

# Proposed Project



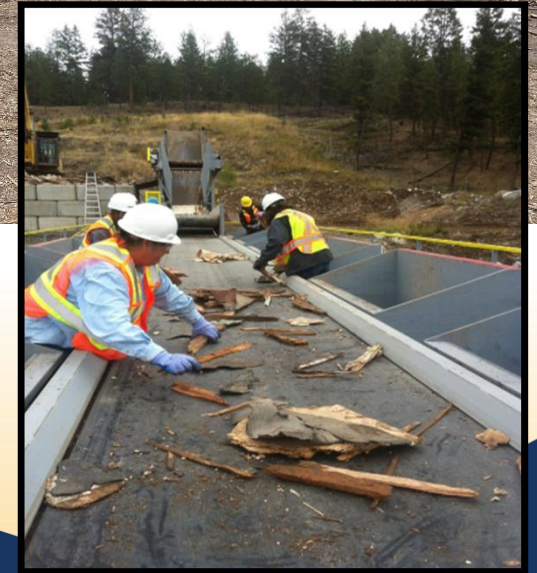
**RDOS Regional Connections**  
<https://rdosregionalconnections.ca/>

# Hedley Clean Up (Crown and Road RoW)...



# DLC, RV/Trailer Sorting

- The RDOS sorts, then recycles & reuses DLC waste.
- 93% diversion rate
- Strict assessment process (i.e. Asbestos)
- Recently piloted RV and Trailer disassembly, sort, reuse and recycle



## Other Initiatives...



- Curbside Food Collection
- Solid Waste Management Plan  
- Update
- Constructing leachate collection system (CML)
- Construction of liners at (CML)
- Construction of a second scale and resident drop off area  
CML
- Keremeos LF closure



# What are our Challenges...

- Wood Waste - need solutions
  - Unreliable disposal
  - Ship out of region
  - No solutions for wood contaminated with paint or glue.
- Clean Gypsum – no means to recycling in Okanagan
- Asphalt Shingles – no means to recycle in Okanagan

# What are our Challenges...

- Recycle B.C.
  - Not covering the costs for existing depots
  - New eligibility criteria for depots – many rural depots not eligible and may be defunded
  - Card board – market is low, commercial cardboard being subsidized
  - The EPR is limited – local government subsidizes, ie pressurized containers.
  - Difficult to meet contamination targets
- Refuse clean up on crown land, road right of ways.
  - Local governments end up subsidizing what is a provincial responsibility.
  - No RAPP response to polluters. No enforcement.
  - Regional Districts do not have the legislative power to do clean ups. Borrow provincial authority.

# QUESTIONS

