



A "Hands-on" Perspective



We Like Challenges

- Reclaim Plastics
- Origin Story
- 9 staff, central location in Burnaby
→ 2 engineers

Repairable



Repairable



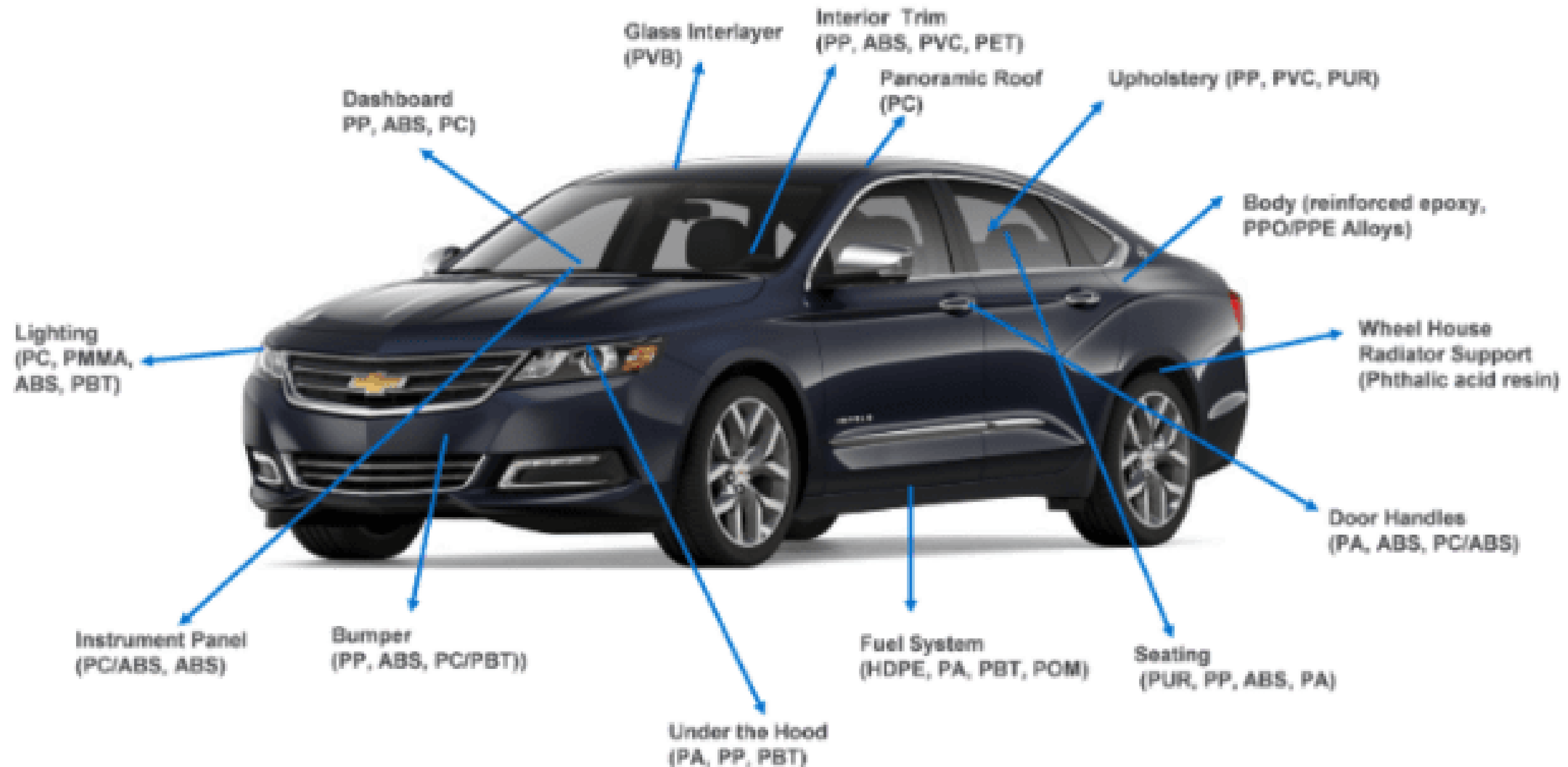


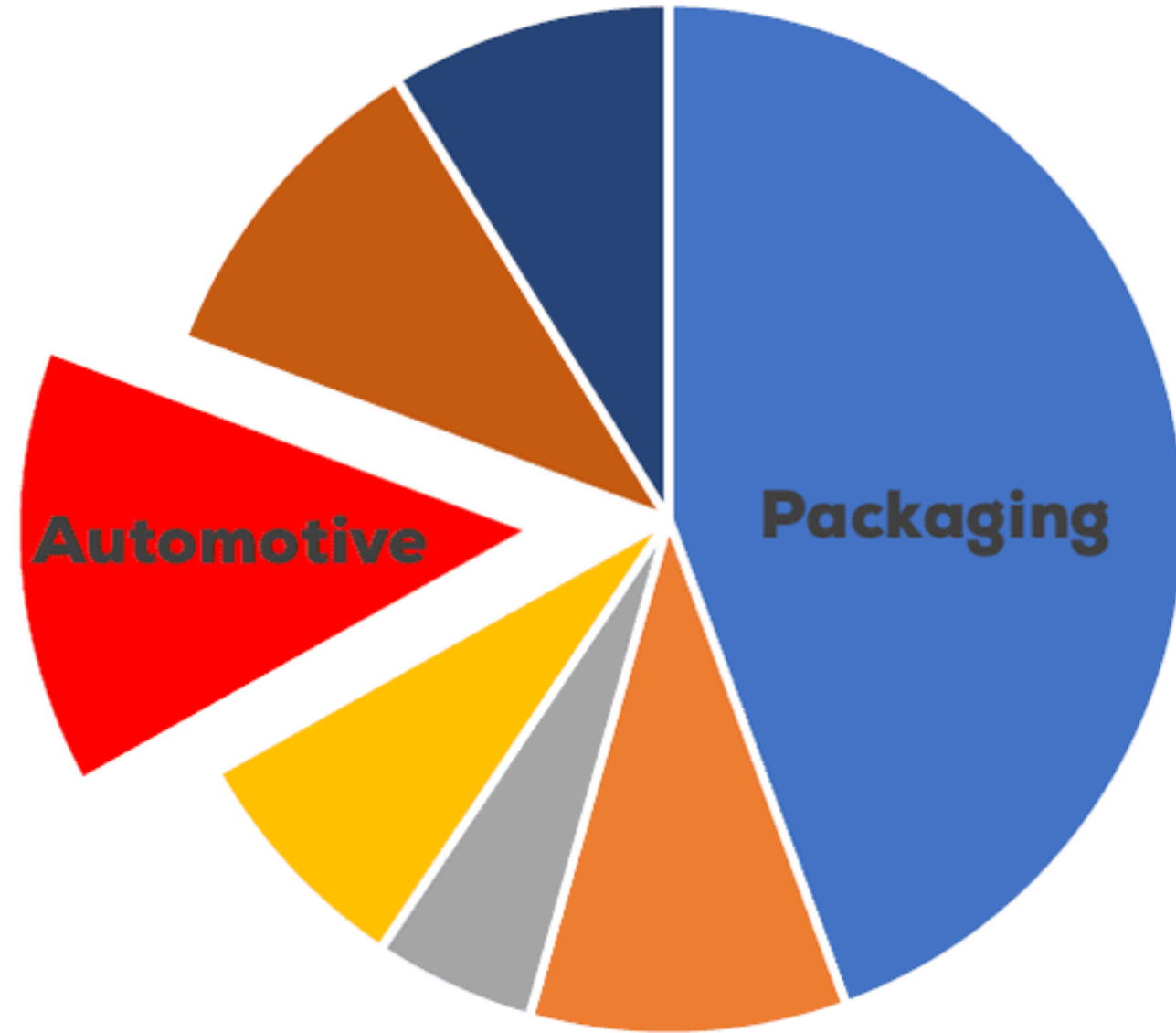
**Beyond
Repair**



500+ pounds of plastic in every car.

Plastics Applications in Automotive Parts

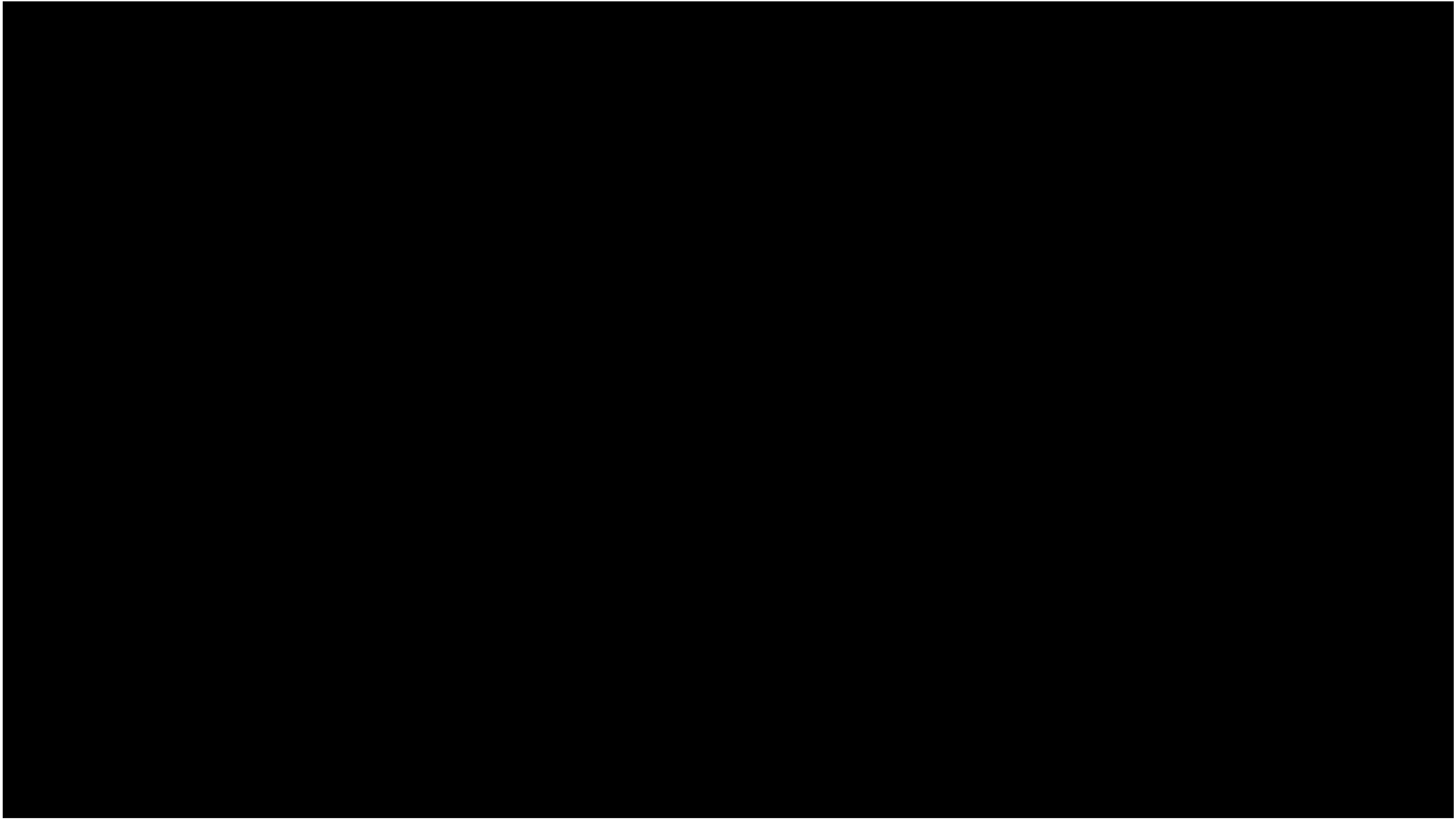




Automotive plastics are 2nd largest contributor of plastic waste

Deloitte LLP (2019) report to Environment & Climate Change Canada

- Packaging
- E-waste
- Agriculture
- Major Appliances
- Automotive
- Textile
- Construction



Metro Vancouver Disposal Ban

"Auto parts and bodies have been considered ***Banned Hazardous and Operational Impact Materials*** under Metro Vancouver's Tipping Fee Bylaw for a number of years. Disposal bans are enforced at Metro Vancouver and City of Vancouver disposal facilities."

Disposal Ban on Auto Parts and Bodies

September 5, 2019

Metro Vancouver bans the disposal of materials that are readily recyclable or operationally hazardous. The region has a successful 20-year history of increasing waste diversion through bans at disposal facilities.

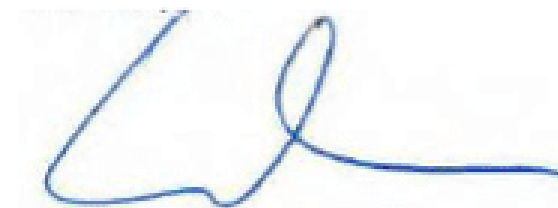
Auto parts and bodies have been considered Banned Hazardous and Operational Impact Materials under Metro Vancouver's Tipping Fee Bylaw for a number of years. Disposal bans are enforced at Metro Vancouver and City of Vancouver disposal facilities. Loads received at Metro Vancouver and City of Vancouver solid waste facilities are visually inspected for banned materials, and surcharges are levied if banned materials are present in the loads.

Auto bodies and parts such as bumpers can be recycled. It is important to separate these materials from garbage. The following resources may be helpful in finding recycling options in Metro Vancouver:

- <http://www.metrovancoverrecycles.org>
- <https://www.rcbc.ca/>
- call the Recycling Hotline 604-732-9253 for a list of recycling locations
- visit the Automotive Retailers Association website for further recycling guidance under the Green Garage certification program <https://www.ara.bc.ca/greengarage/>.

More information on Metro Vancouver programs is available at www.metrovancover.org including a complete list of disposal ban materials, which can be found by searching "banned materials".

Yours truly,



Paul Henderson, P.Eng
General Manager, Solid Waste Services

But it's still a Problem...







- Metrics & analytics to show recycling efforts/diversion from the landfill
- Social media recognition
- Printed (or digital) badge to promote environmental consciousness

Our Capabilities

We can process 1 ton (2000 lbs) of plastics per hour.

- 4 shaft shredder (unique to British Columbia)
- Metal separation system
- Rotogran granulator
- 3/4 acre yard space for staging material, 10,000 sq ft facility



cleanBC



SSI Shredding Systems

- Automotive
- Ocean materials (inc rope and fishing nets)
- Paint buckets
- Trays
- ICI / Neoprene
- Mixed materials

HDPE Paint Buckets

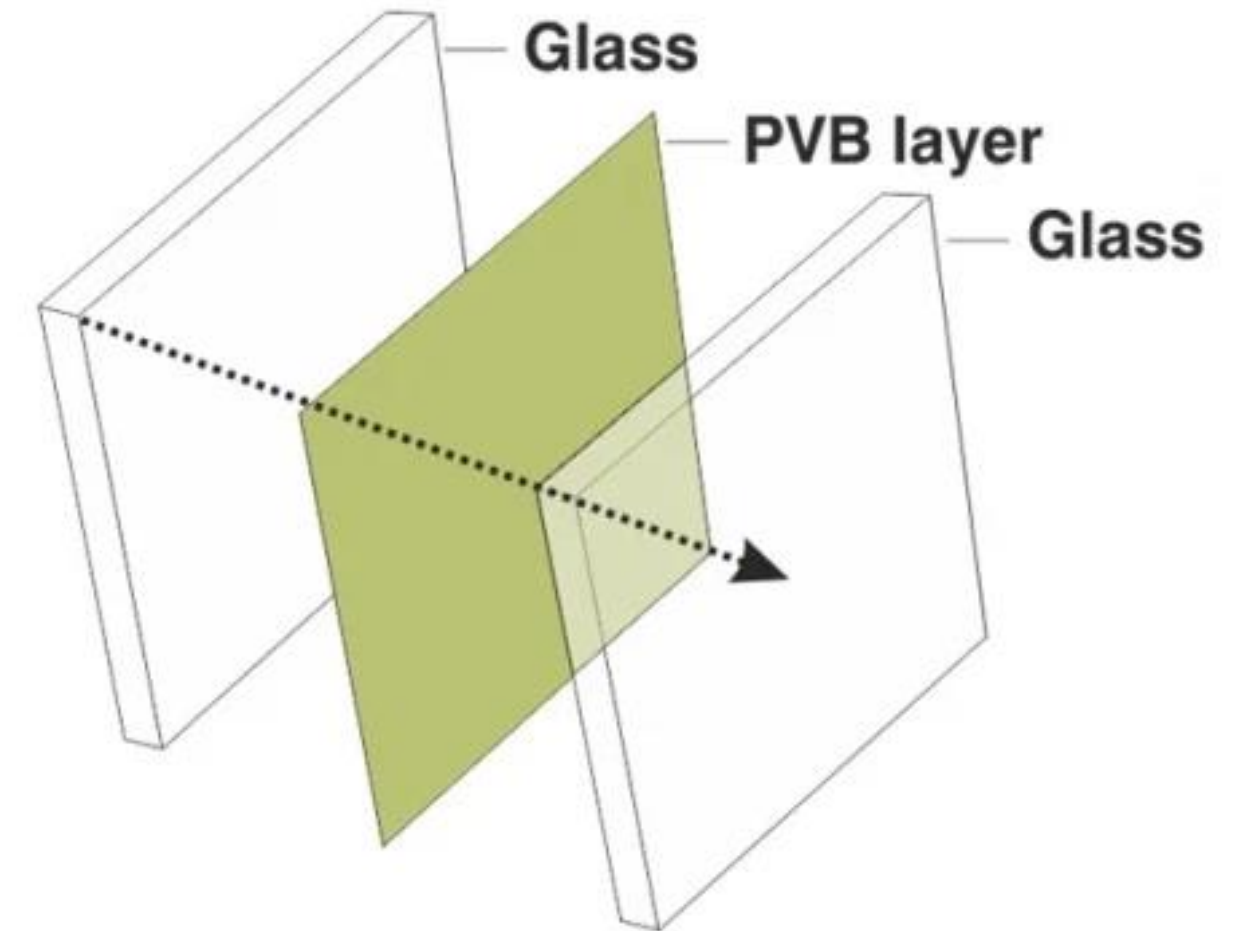




Latest Challenge

- Partnership with Mother Earth Recycling
- Across Canada, over 1.2 million windshields are replaced annually and sent to our landfills.
- In BC, 100% of replaced windshields enter our landfill.
- The plastic makes it challenging → Polyvinyl Butyrate (PVB)

Laminated Glass Construction



Latest Challenge

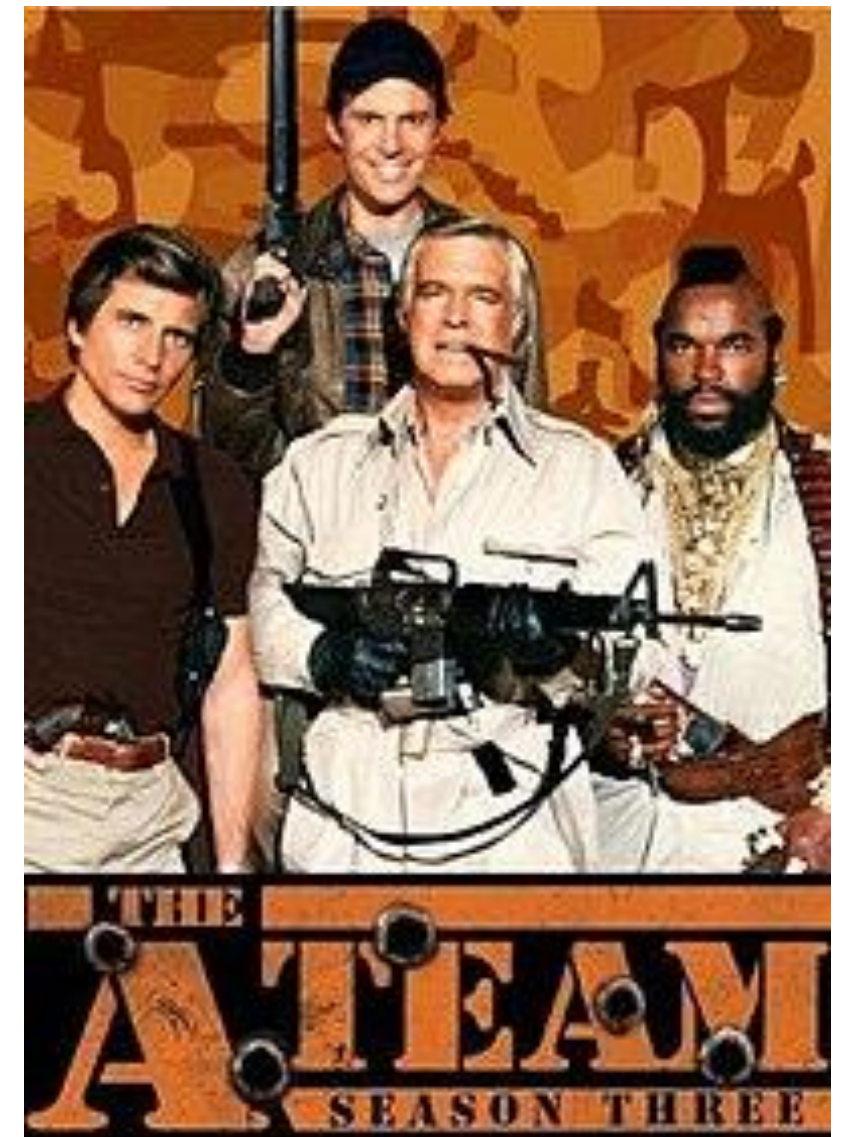


THE RECLAIM TEAM

Ready for your ICI Plastic Challenges!

al@reclaimplastics.com / 604-549-6880

Collaborations welcome!













Reclaim
P l a s t i c s

Thank you.